



EXAMINATIONS COUNCIL OF ESWATINI
Eswatini General Certificate of Secondary Education

CANDIDATE
NAME

--

CENTRE
NUMBER

--	--	--	--	--

CANDIDATE
NUMBER

--	--	--	--

FASHION AND FABRICS

6904/01

Paper 1 Theory

October/November 2023

2 hours

Candidates answer on the Question Paper.

No additional materials are required.

READ THESE INSTRUCTIONS FIRST

Write your centre number, candidate number and name on all the work you hand in.

Write in dark blue or black pen in the spaces provided on the question paper.

You may use a soft pencil for any diagrams or rough working.

Do **not** use staples, paper clips, highlighters, glue or correction fluid.

Section A

Answer **all** questions in the spaces provided on the Question Paper.

You are advised to spend no longer than 45 minutes on Section A.

Section B

Answer **two** questions only in the spaces provided on the Question paper.

Section C

Answer **either** question **5** or **6** on the lined pages at the end of the Question Paper.

The number of marks is given in brackets [] at the end of each question or part question.

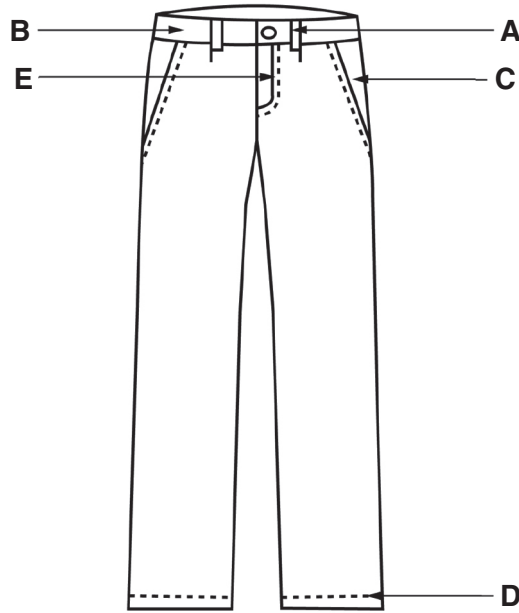
For Examiner's Use	
A	
B	
C	
Total	

This document consists of **14** printed pages and **2** blank pages.

SECTION A

Answer **all** questions in the spaces provided.

1 (a) (i) Identify the style features shown on the trousers below:



- A
- B
- C
- D
- E [5]

(ii) The trousers above can be made using lightweight denim. Explain how a denim fabric is constructed.

.....

.....

..... [3]

(b) Identify **three** secondary colours.

- 1
- 2
- 3 [3]

(c) Fabrics made from blended polyester and cotton fibres are used to make garments.

(i) State **three** properties of polycotton.

- 1
-
- 2
-
- 3
- [3]

(ii) Identify **three** ways in which a polyester cotton blend fabric can be produced

- 1
-
- 2
-
- 3
- [3]

(d) Draw and explain the meaning of **one** care symbol for washing and **one** care symbol for drying polycotton fabrics.

Washing symbol:

Explanation:

Drying symbol:

Explanation: [4]

(e) Describe how the following fabric finishes are achieved for fabric made from polyester.

(i) Durable press finish/Heat setting.

.....
.....
..... [2]

(ii) Antistatic.

.....
.....
..... [2]

(f) State **two** advantages of using a knitted fabric to make a garment.

.....
.....
.....
.....
..... [2]

(g) Give **two** differences between natural and chemical dyes.

.....
.....
.....
.....
..... [2]

(h) Explain how a satin weave is constructed.

.....
.....
.....
.....
..... [3]

(i) Describe the difference between darning and patching.

.....
.....
.....
.....
.....
.....
.....
.....
.....
..... [4]

(j) Describe how to take each of the following body measurements:

(i) Crotch depth.

.....
.....
..... [2]

(ii) Hip measurement.

.....
.....
..... [2]

Total Marks: [40]

SECTION B

Answer any **two** questions from this section in the spaces provided.

2 (a) Define the following textile terms:

(i) Filament

.....
..... [1]

(ii) Selvedge

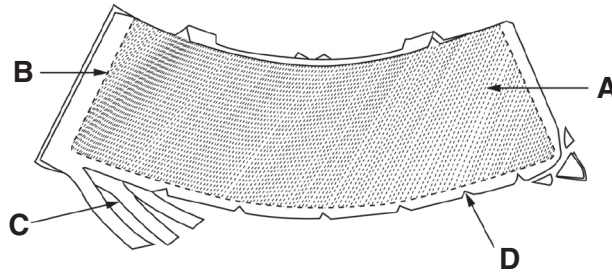
.....
..... [1]

(b) State **two** positions where single-pointed darts can be made in garments.

(i)

(ii) [2]

(c) Explain each labelled process for making a flat collar shown on the diagram below.



A

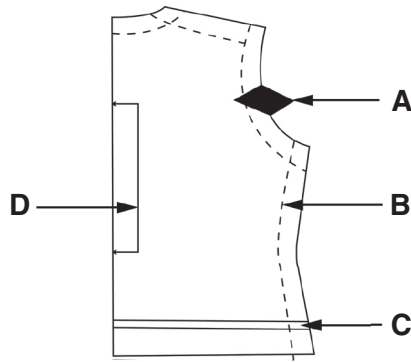
B

C

D

..... [4]

(d) Identify and explain the meaning of the **four** pattern makings labelled **A – D** on the pattern piece below:



A

.....

B

.....

C

.....

D

..... [4]

(e) Explain how to sew a two-hole button on a garment made from a medium-weight fabric. You must use diagrams to support your answer.

.....

.....

.....

.....

.....

.....

.....

.....

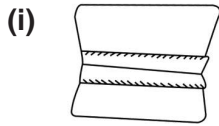
..... [8]

Total Marks [20]

3 (a) Define haberdashery and give **one** example of haberdashery.

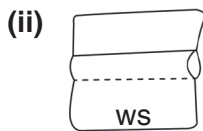
.....
.....
..... [2]

(b) Identify the following seams and suggest the type of fabric each seam would be used for.



Name of the seam.

.....
Suitable fabric.
..... [2]



Name of the seam.

.....
Suitable fabric.
..... [2]



Name of the seam.

.....
Suitable fabric.
..... [2]

(c) Explain **two** reasons for fitting garments during sewing.

1
.....
2
..... [4]

(d) Explain the difference between understitching and topstitching.

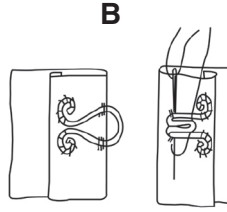
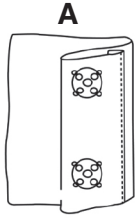
.....
.....
.....
.....
..... [2]

(e) Explain how to attach a yoke to a gathered skirt back made from lightweight fabric. You must use diagrams to support your answer.

.....
.....
.....
.....
.....
.....
.....
.....
.....
.....
.....
.....
.....
.....
.....
.....
.....
.....
.....
.....
..... [6]

Total Marks [20]

4 (a) Identify the types of fasteners below.



A

B [2]

(b) State **two** characteristics of a well-sewn seam on a garment.

(i)

.....

(ii)

..... [2]

(c) State **one** function of each of the following equipment:

(i) Pinking shears.

.....

..... [1]

(ii) Feed dog.

.....

..... [1]

(d) Identify **one** thermoplastic fibre and **one** non-thermoplastic fibre. State how each type of fibre reacts to a burning test.

(i) **Thermoplastic:**

Reaction to burning test [2]

(ii) **Non-thermoplastic:**

Reaction to burning test [2]

